

Vorprojekt – Neubau Mehrfamilienhaus
Pilatusstrasse in 5618 Bettwil / AG

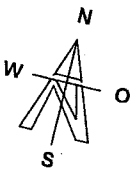
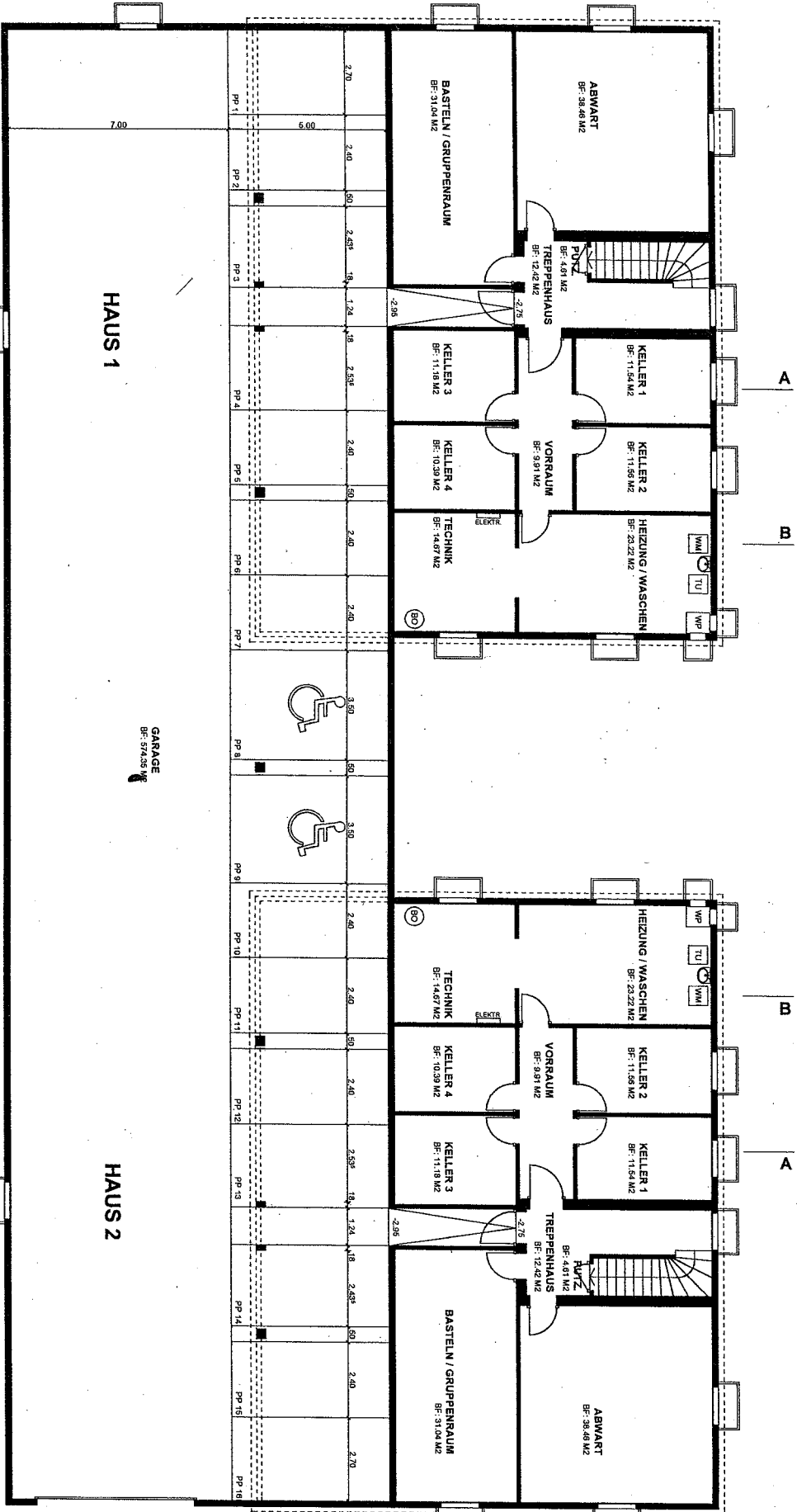
02. März 2010

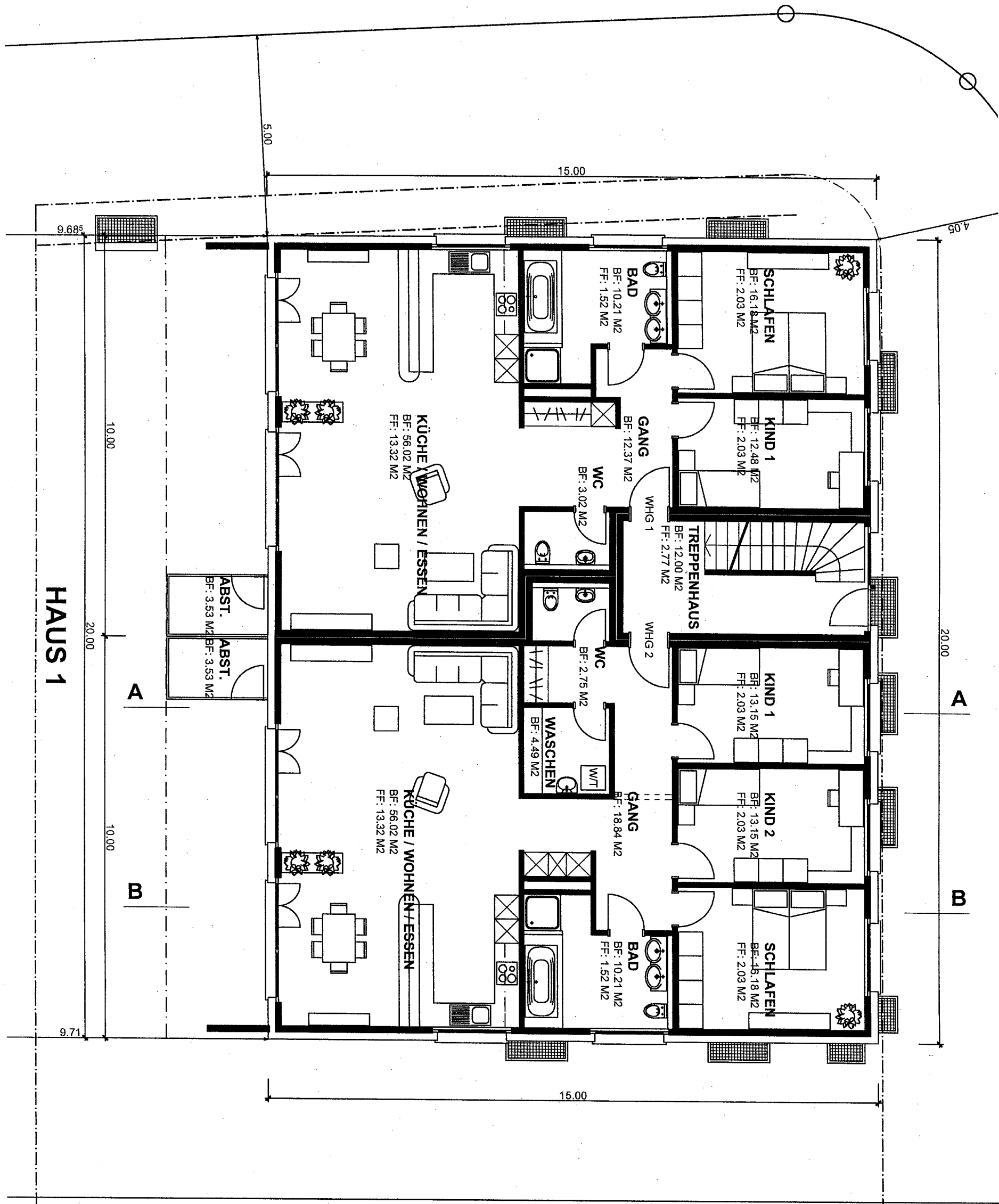
Bauherrschaft : Markus Glauser
 Honeriweid
 6287 Aesch

OBJEKT : Neubau Mehrfamilienhaus
Parzelle Nr. 152

Architekt : Killer & Partner AG
 Rigiweg 22
 5614 Sarmenstorf

Tel : 056 667 15 10





HAUS 1

9.685

4.05

5.00

15.00

10.00

20.00

10.00

9.71

20.00

B

A

B

A

KÜCHE / WOHNEN / ESSEN
BF: 56.02 M²
FF: 13.32 M²

KÜCHE / WOHNEN / ESSEN
BF: 56.02 M²
FF: 13.32 M²

ABST.
BF: 3.53 M²

ABST.
BF: 3.53 M²

SCHLAFEN
BF: 16.18 M²
FF: 2.03 M²

KIND 1
BF: 13.15 M²
FF: 2.03 M²

KIND 2
BF: 13.15 M²
FF: 2.03 M²

SCHLAFEN
BF: 16.18 M²
FF: 2.03 M²

KIND 1
BF: 12.48 M²
FF: 2.03 M²

BAD
BF: 10.21 M²
FF: 1.52 M²

BAD
BF: 10.21 M²
FF: 1.52 M²

WC
BF: 3.02 M²

WC
BF: 2.75 M²

WASCHEN
BF: 4.49 M²

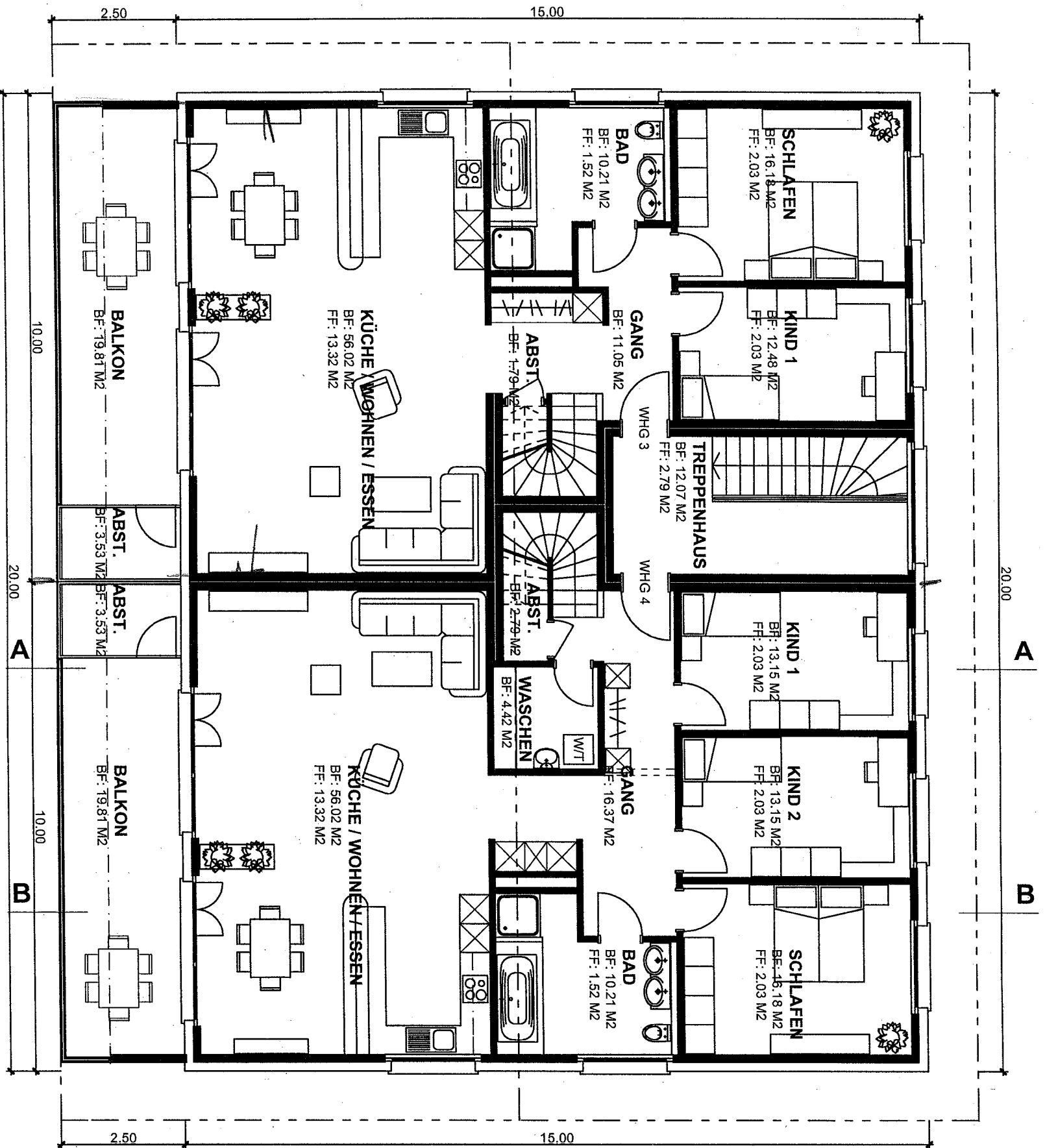
GANG
BF: 12.37 M²

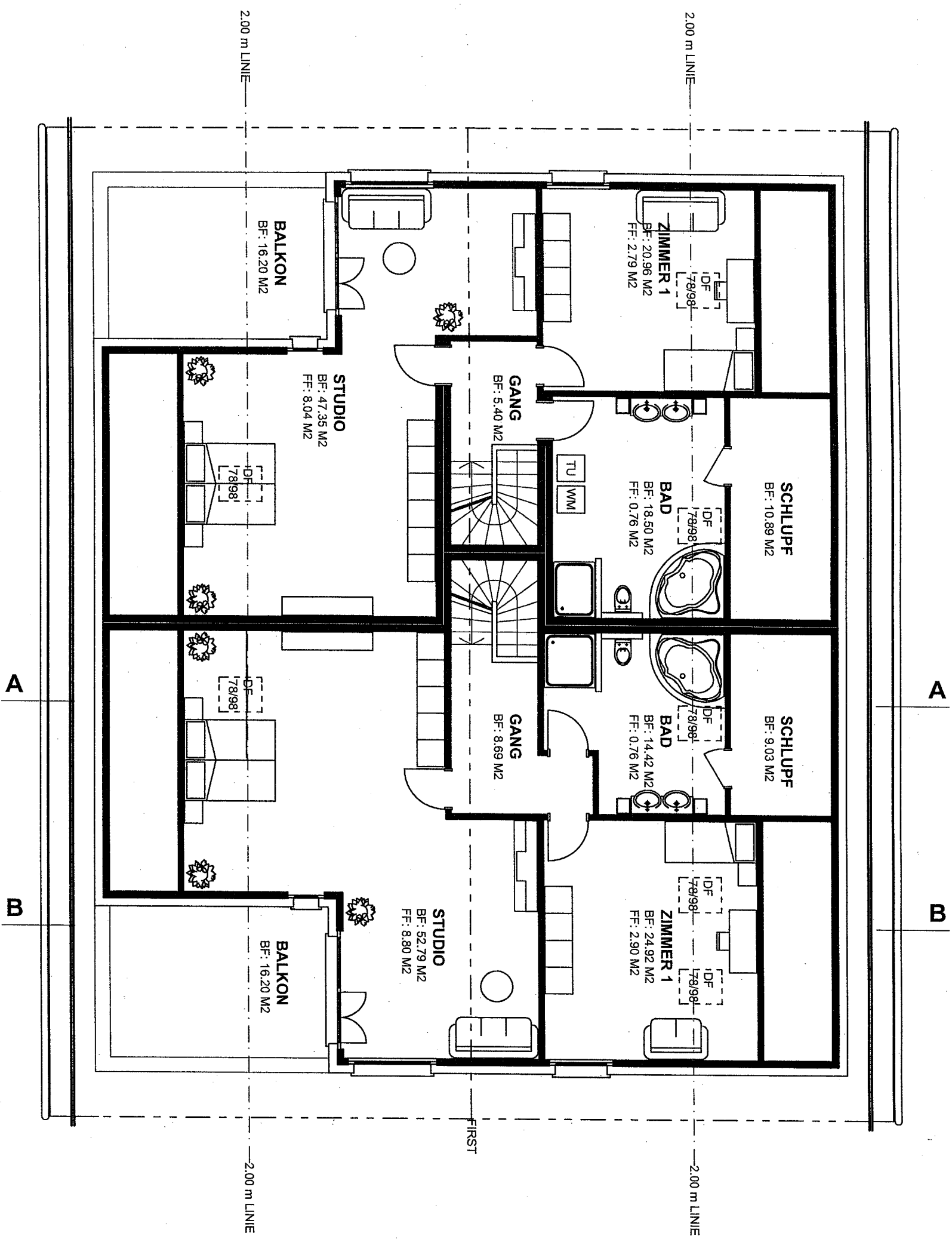
GANG
BF: 18.84 M²

TREPPENHAUS
BF: 12.00 M²
FF: 2.77 M²

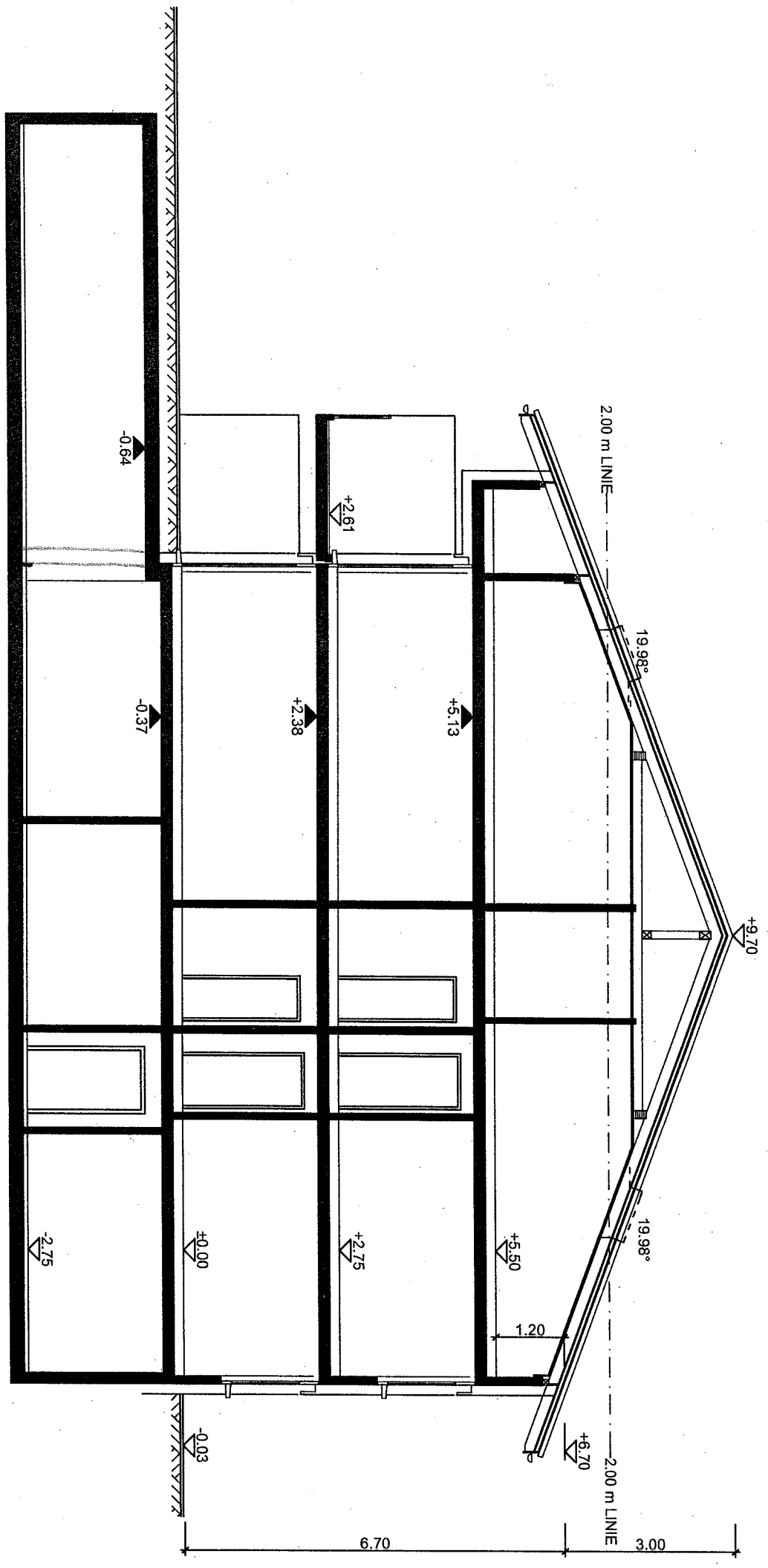
WHG 1
BF: 2.77 M²

WHG 2
BF: 2.77 M²

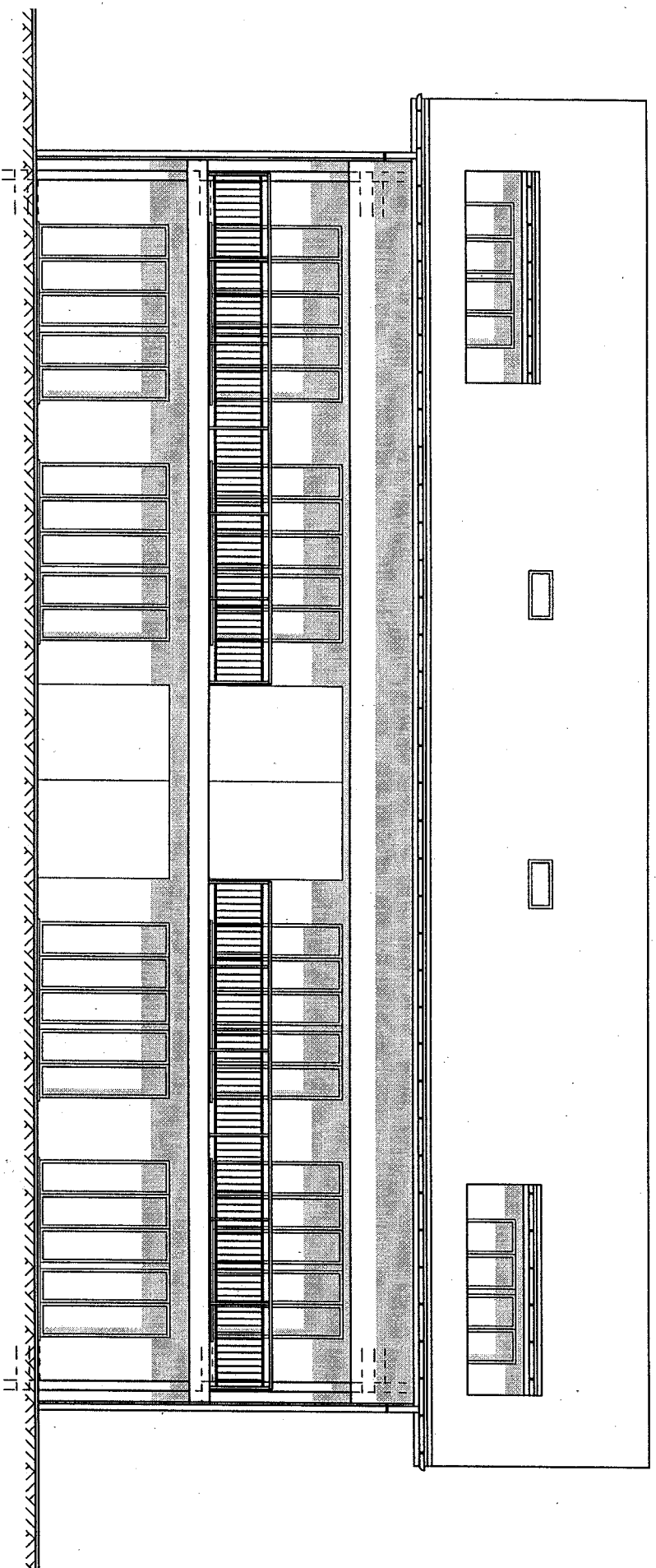




HAUS 1

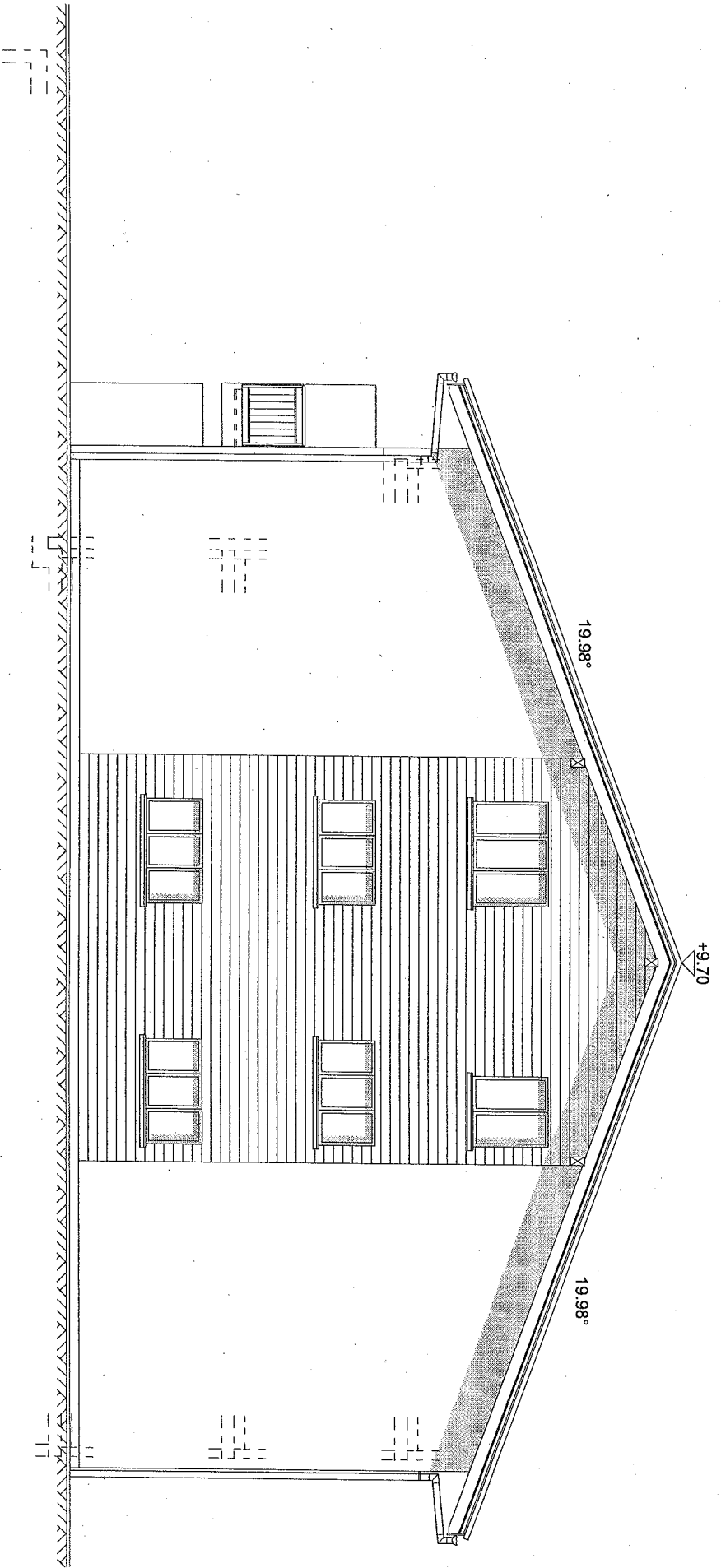


SCHNITT A - A

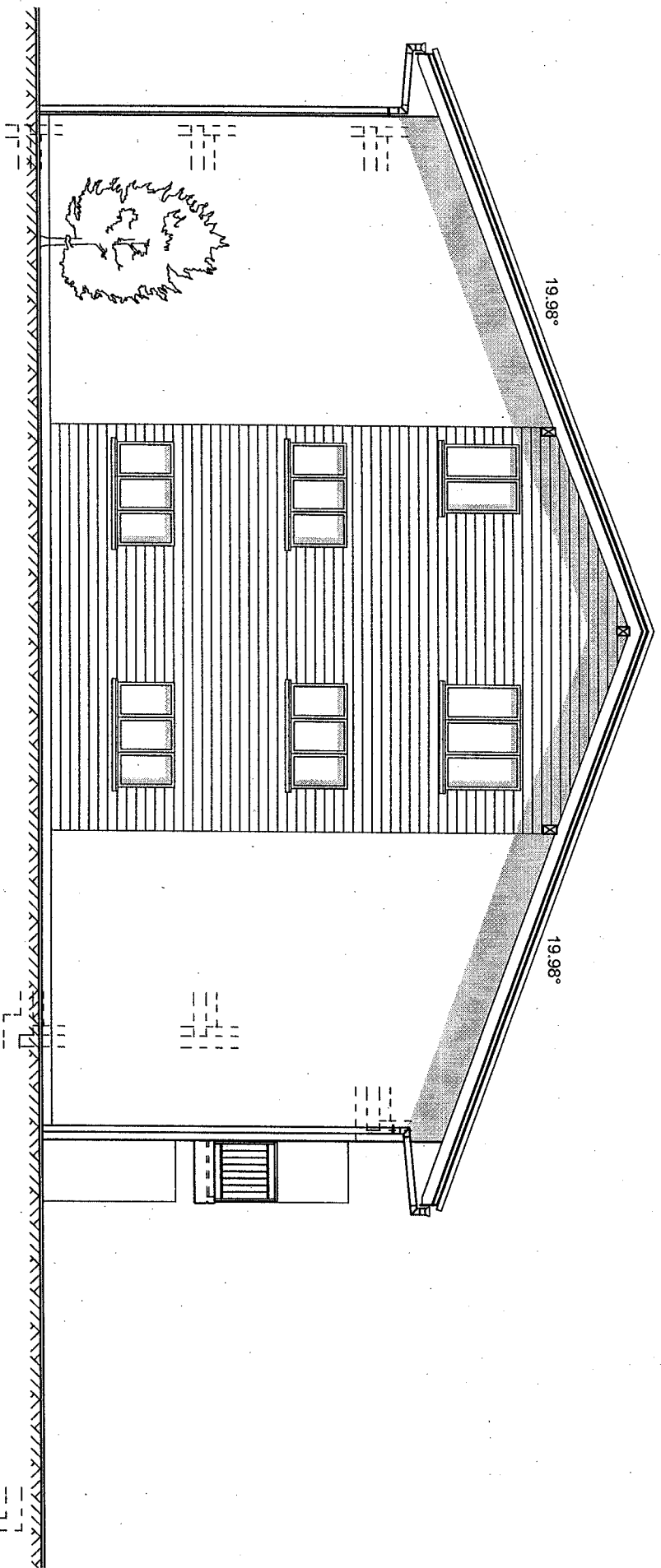


WESTFASSADE
HAUS 1



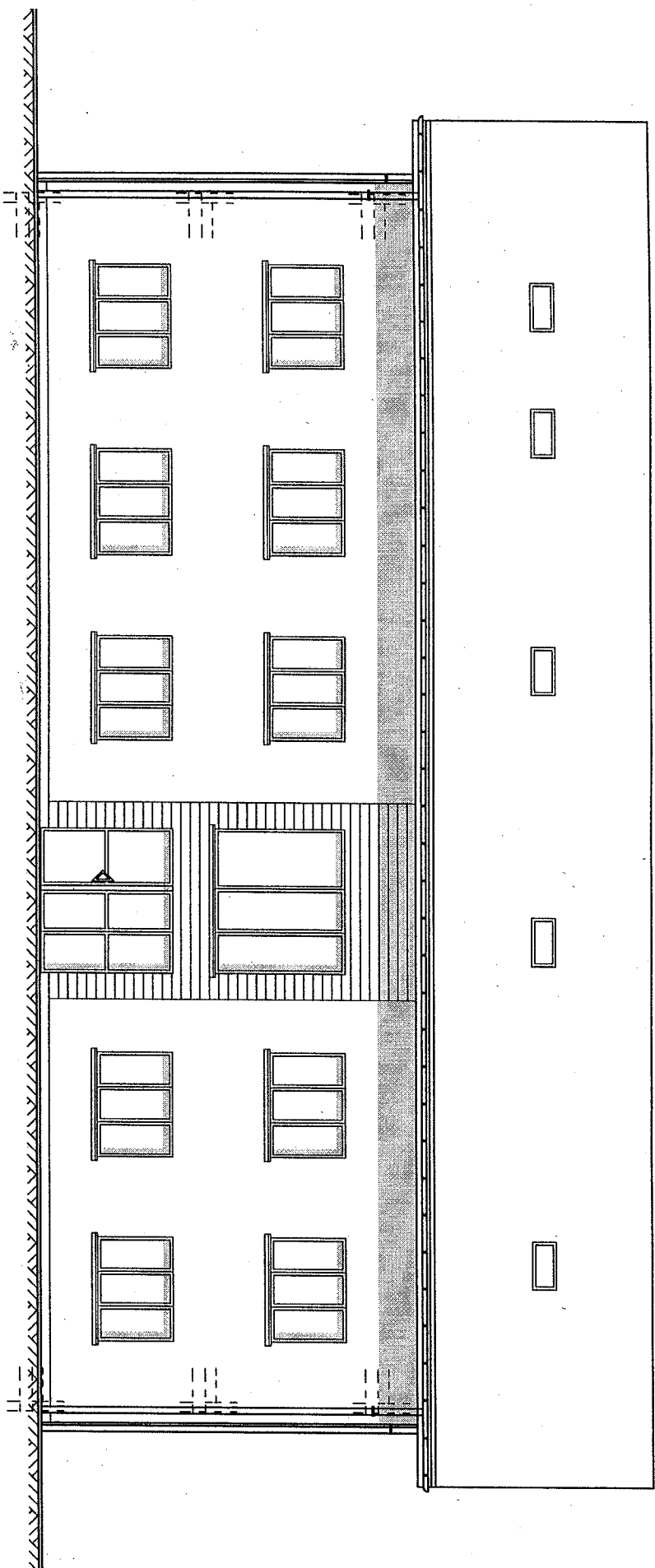


**SÜDFASSADE
HAUS 1**



**NORDFASSADE
HAUS 1**





**OSTFASSADE
HAUS 1**